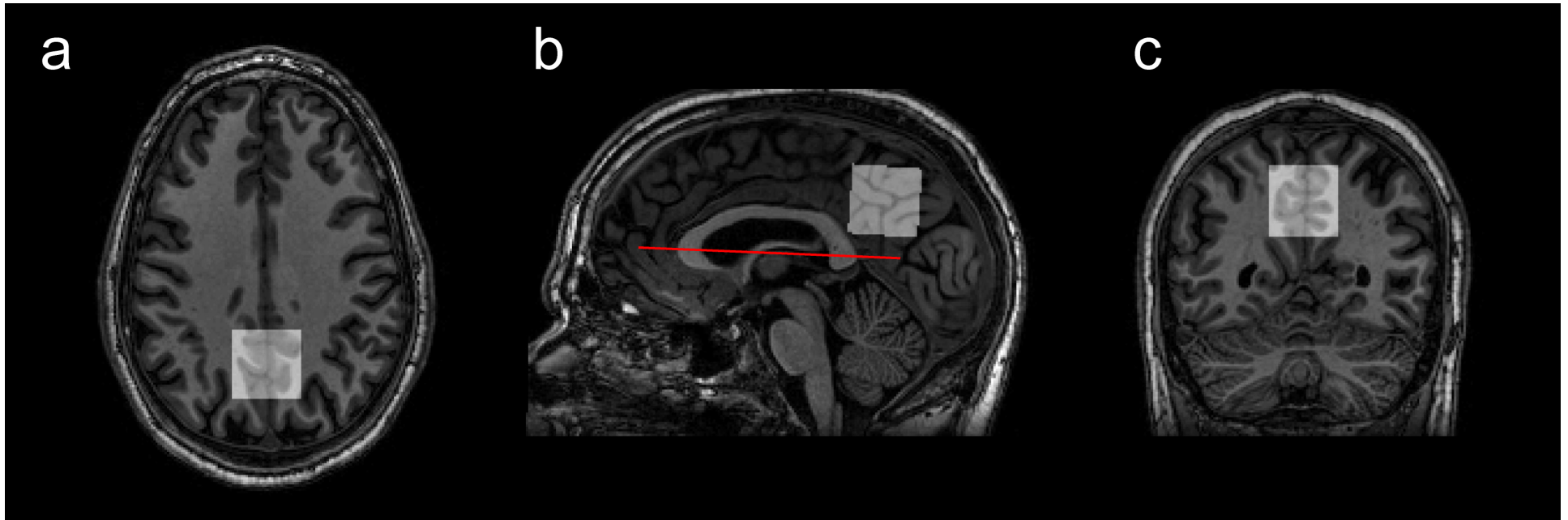


Fig. 1



**Instructions for voxel placement:**

- 1) Place the voxel on the T1 structural image and position it in the parietal lobe.
- 2) In the axial/coronal planes place the voxel medially (Fig. 1a and 1c).
- 3) In the sagittal plane, while viewing the structural slice that shows the middle of the brain (i.e., straight down the interhemispheric fissure) (Fig. 1b), do the following:
  - i) Rotate the voxel so that the inferior edge of the voxel is aligned with the line measured from the most anterior and most posterior edges of the corpus callosum (CC) (red line in Fig. 1b).
  - ii) Position head-to-foot such that the bottom two corners of the voxel meet with the edges of the CC and parieto-occipital fissure (POF). More specifically, prioritize the following:
    - i. Stay within the brain (top-right corner of voxel).
    - ii. While compliant with i., stay off the CC (bottom-left corner of voxel) and, ideally, touch the posterior edge of the CC.
    - iii. While compliant with i. and ii., stay anterior of the POF (bottom-right corner of voxel) and, ideally, touch the POF.

**NB:** If presented with “unfavorable” anatomy, use your judgement to position the voxel as best as possible while avoiding lipid and/or CSF contamination.